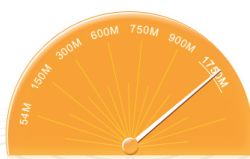


## Home Digital Entertainment Center World's Fastest WiFi- Up to 450+1300Mbps Share Easily

Wireless AC1750 Dual Band Gigabit Router

### What It Does

The Tenda W1800R is a 5th generation dual-band Wi-Fi router that delivers wireless speeds up to 1750Mbps, currently the fastest available. Compatible with next generation WiFi devices and backward compatible with 802.11 a/b/g and n devices, it enables HD streaming throughout your home. The W1800R with simultaneous dual band WiFi technology offers speeds up to 450+1300Mbps and avoids interference, ensuring top WiFi speeds and reliable connections. This makes it ideal for larger homes with multiple devices. In addition, four Gigabit Ethernet ports offer ultra-fast wired connections. Wirelessly access and share USB hard drive and USB printer using the two USB 2.0 ports.



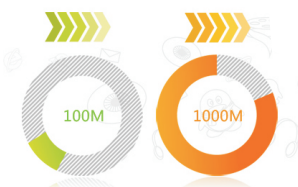
### Gigabit WiFi

Deliver next generation WiFi speed up to 1300 based on the latest 802.11ac technology. It streams HD media and online gaming throughout your home.



### Concurrent Dual Band

Simultaneous dual band WiFi technology delivers up to 450+1300Mbps and effectively reduces interference, ensuring top WiFi speed and reliable connections. You can browse webpages, handle mails and chat over 2.4G while enjoying lag-free HD multimedia and online gaming over 5G without worrying about interference.



### Ultra-Fast Wired Connection

The Router provides Gigabit wired connectivity, which is 10 times faster than conventional Fast Ethernet connections. Ideal for high speed file transfers and streaming HD media.

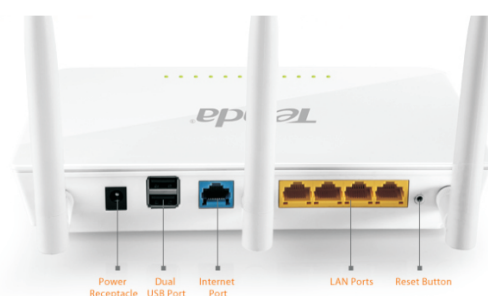


### DLNA Sharing

Find and share video, photo and audio from USB storage/mobile hard drive connected to device USB port and play them on your DLNA compatible devices such as smart TVs, laptops, smart phones.

### USB Sharable

Provide 2 USB 2.0 ports. So you can connect USB storage, USB hard drive or USB printer to these two USB ports for wireless access and sharing.



## Main Features

- **Gigabit WiFi:** Next generation WiFi at up to 1300Mbps based on 802.11ac
- **Concurrent Dual Band:** Works over 2.4G and 5G and delivers up to 450+1300Mbps with reduced interference
- **Gigabit wired connections:** Idea for high speed file transfers and streaming HD media, 10x faster than conventional Fast Ethernet connections
- **DLNA Sharing:** Find media from connected USB storage/mobile hard drive and play it on your DLNA capable devices
- **USB Sharable:** Wirelessly access and share USB printer and USB hard drive

## System Requirements

- 2.4GHz or 5GHz wireless adapter
- Internet broadband service
- Microsoft Internet Explorer 6.0, Firefox 1.0 or higher

## Specification

Hardware Features	
Standards	2.4GHz: IEEE802.11n, IEEE802.11g, IEEE 802.11b; 5.0GHz: IEEE 802.11ac, IEEE 802.11n, IEEE 802.11a; IEEE802.3, IEEE802.3u
Interface	1*10/100/1000M WAN port; 3*10/100/1000M LAN ports; 1*10/100/1000M IPTV port (function as a LAN port with IPTV disabled); 2*USB 2.0 ports.
Antenna	3* 5dBi external, detachable, omni-directional antennas
Button	1*WPS/Reset button
Power	Input: AC 100-240V ~ 50/60Hz 0.3A Output: DC 12V2.5A
Dimensions (L*W*H)	218.6mm*156.5mm*33.8mm
LED	1*Power 1*SYS 1*USB 1*WAN 3*LAN 1*IPTV 1*5G 1*2.4G 1*WPS
Wireless Features	
Wireless Speed	2.4G: 450Mbps; 5G: 1300Mbps.
Frequency	Works over 2.4G and 5G concurrently
Basic Features	Wireless Radio: On/Off SSID Broadcast: On/Off; Band: 2.4GHz, 5GHz; Channel-2.4GHz: 1-13; Channel-5GHz: 149, 153, 157, 161, 165; Network Mode-2.4GHz: 11b/g/n mixed (default mode), 11b/g mixed, 11b, 11g; Network Mode-5GHz: 11a/n mixed (default mode), 11a; Connection List.
Security	Wireless MAC Address Filter (Wireless Access Control); WEP, WPA-PSK/WPA2-PSK, WPA/WPA2; Wireless Security: Enable/Disable; WPS fast encryption.
Software Features	
Internet Connection Type	PPPoE; Dynamic IP; Static IP.
Operating Mode	Wireless Router Mode; WAP Mode WDS Mode.
DHCP Server	DHCP Server; DHCP Client List; DHCP Reservation.
Virtual Server	Port Forwarding; DMZ Host; UPnP.
Security	Client Filter MAC Filter Website Filter Remote Web Management
DDNS	Yes
VPN Pass-through	Yes
Others	Bandwidth Control; USB Sharable: storage & printing; IPTV capable; Guest Network; MAC Clone; DDNS; Traffic Statistics; Backup & Restore configurations
Others	
Package Contents	Wireless AC1750 Dual Band Gigabit Router (W1800R) Power Adapter Ethernet Cable 3* 5dBi omni-directional antennas Quick Install Guide
Temperature	Operating Temperature: 0°C ~ 40°C; Storage Temperature: -40°C ~ 70°C.
Humidity	Operating Humidity: 10% ~ 90% RH non-condensing; Storage Humidity: 5% ~ 90%RH non-condensing.
Factory Default Settings	IP Address: 192.168.0.1 Login User name/Password: admin/admin
Certification	CE FCC RoHS
Related Products	W900U Wireless AC900 Dual-band USB Adapter N80 Wireless N900 Concurrent Dual-band Gigabit Router W568R Wireless N900 Concurrent Dual-band Gigabit Router

## Applications

